

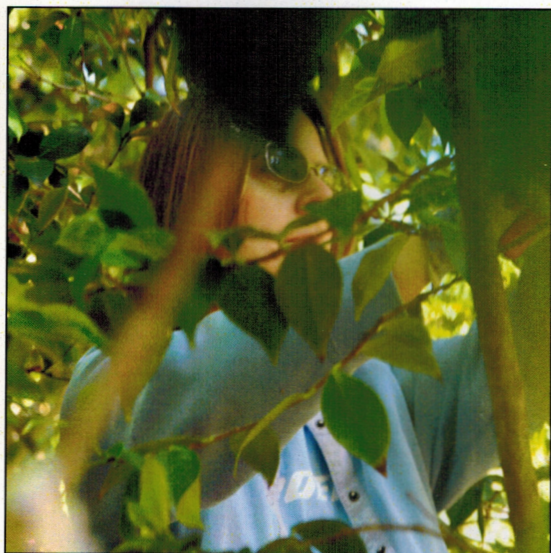
THE  
*Camellia*  
REVIEW

A Publication of the Southern California Camellia Society



*C. japonica* 'Tinker Bell'





Hiromi Sato, upper left  
Dorothy McQuiston, upper right  
Beth Stone, lower left  
Brad King, lower right

# TABLE OF CONTENTS

Vol. 71

April 22—June, 2010

No. 3

That's What I'm Talking About, Donald Lesmeister. . . . .	3
Ever-blooming Camellias, The Dream of the Future, Bradford King. . . . .	4
Show Results	
Pomona Valley Camellia Society. . . . .	6
Southern California Camellia Council. . . . .	9
Kern County Camellia Society. . . . .	11
Pacific Camellia Society "Late Bloomers" Show. . . . .	13
Camellia Society of Sacramento. . . . .	14
Special Day at the Los Angeles County Arboretum, Nancy Kress. . . . .	16
Another Perspective of Yesterday, Today and Tomorrow, Bradford King. . . . .	18
2010 Winners in California, Don Bergamini. . . . .	20
The Top Six Winners in 2010 Southern California shows, Don Gray. . . . .	21
Ten "Must Have" Camellias in San Diego, Dean Turney. . . . .	22
History of Camellia Review, Harold E. Dryden. . . . .	23
Topsoil, Our Dwindling Heritage, Mary Marshdale. . . . .	24
Index of Camellia Review. . . . .	25

## Cover photo

*C. japonica* "Tinker Bell". Small, anemone form.  
Vigorous, upright growth. 1958 Nuccio's.  
Photo by Carol Stickley

## JOIN THE SOUTHERN CALIFORNIA CAMELLIA SOCIETY

Southern California Camellia Society will welcome you as a member.  
Annual membership — \$25.00 Includes subscription to *The Camellia Review* (three issues per year).

New Member	\$25.00	Sponsoring Member	\$50.00
Regular Member	\$25.00	Sustaining Member	\$100.00
Patron Member		\$150.00	

New members will receive credit for two years membership  
and receive a package of our beautiful note cards.  
Send your check payable to Southern California Camellia Society  
40641 Via Amapola, Murrieta, CA 92562  
or by Paypal on our website at  
[socialcamellias.org](http://socialcamellias.org)

---

## THOUGHTS FROM THE EDITOR

From time to time on this "Thoughts" page, I've used Ecclesiastes 3:1 to arouse from dormancy any ideas worth revealing. The concept that there is a time for everything may not jolt us to some seismic behavior, but it can awaken our senses to the panorama of the past and future.

In the archives we found Harold Dryden's report on the infancy of *The Camellia Review* and included it in this issue. You will appreciate his concept of what the *Review* should be and do. To me it is significant that this "Review Banner" has been carried by numerous humble souls down to this day in June, 2010.

*The Camellia Review* for the past sixty plus years has served us well. The 21st Century has introduced us to new technologies which means that it is time to consider more modern methods to transmit information in addition to the printed word. You have seen the rise of personal computers, the internet, e-mail, web pages, cell phones that not only allow you to make telephone calls pretty much around the world but to also take pictures, browse the internet, read and send e-mail, and even play games! These are amazing developments to someone who grew up on a farm in Oklahoma not only without a telephone or computer but even without running water or electricity. As a Professor of Engineering at California State Polytechnic University in Pomona I taught engineering students how to use a slide rule up until 1973. This week when I was replacing my lost cell phone, I had to explain to the young man who served us at the Verizon store what a slide rule was. Is this not an exciting time to be alive?

But it's also time for me to retire as Editor of *The Camellia Review*. When I was asked to take on this job back 17 years ago I thought it was for just one year. The next issue of the *Camellia Review* will have a new Editor or Editors. There may be some changes but nothing drastic.

—Mel Belcher, Editor

### **2009 Camellia Nomenclature**

Copies of the 2009 Camellia Nomenclature are still available.

Special sections have been added listing cold hardy and fragrant cultivars.

Price is \$20.00 including tax and shipping.

Orders can be placed by sending a check to:

Southern California Camellia Society

c/o Bobbie Belcher, Treasurer

40641 Via Amapola, Murrieta, CA 92562.

or visit our website [socalcamellias.org](http://socalcamellias.org)  
and order on line.

---

## THAT'S WHAT I'M TALKING ABOUT

Don Lesmeister, Co-Show Chairperson  
Sacramento Camellia Society 86th Show  
Carmichael, California

One of the concerns of flower and garden organizations, including camellia societies is the getting and RETAINING new members. This is a subject that has been discussed for several years but to date no magic wand has been discovered. The Camellia Society of Sacramento has also been working on this situation. We have not found a magic wand either, but maybe some of our ideas may work for your Society. We can't guarantee results for you if you use them, but we can predict the results if you do nothing.

At our monthly meetings our President Carol Schanz meets and greets all of the newer members and guests. Other long time members make a concerted effort to at least say "Hi" to newer members. During our monthly plant raffles, growers with the larger collections of camellias usually give their winning tickets to the newer members. We have a "5 Minute Mile" at every meeting, where cultural ideas from repotting to showing camellias are presented. We have a monthly bloom competition only for the people who have never won a Best of Show trophy. At our February monthly meeting we have a Mini Camellia Show with 3 trophies given to the winners, but only to those who have never won Best of Show. These two shows are designed for newer exhibitors, not the "Pros." Our objective is to be facilitators not obstacles in the way of our members.

From a civic standpoint we have outreach programs to other organizations. We send reminders annually to the Sacramento City Council and Sacramento County Board of Supervisors about our camellia show. Debbie Arrington, Garden Editor for the Sacramento Bee Newspaper is one of our monthly speakers.

At our 86th Annual Camellia Show we had a new category for Members who have never won Best of Show. AND we gave two trophies for our "Intermediate Class" for anyone who had never won a trophy at any Camellia Show. We also have a Junior Class with four trophies. We gave ribbons to all our exhibitors. The following year, we use the entry cards to send show schedules and entry cards to non-member exhibitors in advance of our show and encourage them to attend. We also give a free camellia plant to any newly joining member.

This sounds pretty good huh! But does this produce results?

At every monthly meeting this year we had 6-8 of our newer members or guests attend. We had over 100 camellia blooms at our February "Mini Show." Two of our newer members won trophies. Both of them are still excited.

From a civic standpoint Mr. Kevin Johnson, Sacramento City Mayor, opened our camellia show with a short camellia-oriented talk. Mr. Roger Dickinson, from the Sacramento County Board of Supervisors, also gave a nice talk. The two men walked around the show, talked with the public and had pictures taken with them. The men were pleased to see all the camellia blooms (2150 blooms) and the large attendance by the general public. Other members of the City Council and Board of Supervisors made financial contributions to help pay for renting the Memorial Auditorium and other show expenses.

The Sacramento Bee published several articles about the Show, which was a publicity gift from heaven, for we had over 3000 attendees at the two-day Show. Thirteen people join our Society.

And last, and the most important thing of all, at the Show an excited

six-year old girl, Ava Urbina, won her first Junior Trophy. Our youngest Society Member, probably "Rookie of the Year" Zac Warren, newer member Irene Moore and 30-year exhibitor John McDaniel won their first trophies in the regular classes. Shellie-Rae

Leverett won her first trophy in the Intermediate Class. Between the tears and wide smiles, we have hooked a lot of new folks for life.

**NOW THAT'S WHAT I'M  
TALKIN' ABOUT!**

•••••

## **EVER-BLOOMING CAMELLIAS— THE DREAM OF THE FUTURE**

**Bradford King**

The dream of the future for camellia hobbyists is the development of camellias that will rebloom in the same season. Inspiration for this goal comes from the discovery in Asia of the three camellia species that have this capability. They are: *C. amplexicaulis*, *C. azalea* and *C. chuangtsoensis*. There are great opportunities when using these species in hybridizing. While there is much more to learn about them, this is what we know about them so far—

### ***C. azalea***

*C. azalea* is capable of flowering throughout the year and has been observed in China growing in the wild along the banks of a small stream. It has also been observed in the research greenhouse at Longwood Gardens in Pennsylvania. Longwood Gardens began their breeding with *C. azalea* in 2000 with the specific goal of producing repeat-blooming, cold hardy camellias. I began hybridizing with pollen of *C. azalea* from Longwood Gardens in 2006. I used "Tama-No-Ura" as the initial seed parent which resulted in four seedlings of which only one has survived. The loss of seventy five percent of these seedlings is extremely high. Typically, seedling loss is less than 15 percent. This identifies a major problem with *C. azalea*. It is hard to grow on its own roots and, apparently, this is also true of its seedlings. The plant looks as if it has an iron or mineral deficiency but applications of iron or fertilizer with

trace mineral elements (Miracle Gro) doesn't alleviate the problem. This is an area for further study.

In addition I have observed, as has You Muxian from China, that *C. azalea* hybrid seedlings develop much slower than japonica seedlings. Why is this the case? This needs to be investigated more thoroughly.

Fortunately *C. azalea* grafts have not had the iron/mineral deficient problems, but Longwood Gardens reports leaf nacreous on some of their grafts. This has not been a problem here in California where we grow them outside in pots. Longwood Gardens has also reported that many of the seed pods open in 2 - 2 1/2 months which is not long enough for them to develop viable seeds. However, You Muxian from China completed control crosses with *C. azalea* which developed seed pods with viable seeds in 100 days which is half the amount of time a typical japonica takes to develop its fruit. This is also worth more careful study.

Longwood Gardens is the only place in the United States I am aware of using *C. azalea* as a seed parent. Professor Gao Jiyin of China reports that *C. azalea* has been used as a seed parent with 21 different camellia species and 24 species with *C. azalea* as a pollen parent. In addition they have 500+ hybrid seedlings.

Interestingly, this specie thrives in hot temperatures of 90°-100°F. and can withstand cold to 23°F. This provides many opportunities to breed cultivars that can tolerate a wide range



---

of temperature or that can live in areas where camellias typically can't survive.

### ***C. chuangtsoensis***

This is the newest camellia repeat-blooming species to be discovered. It was collected in a deep mountainous area of China in 2008. The first report to the English speaking world is in the fall 2009 issue of the *American Camellia Journal*. It is described as having a deep yellow small single to semidouble flower with 12 to 15 non-waxy petals. The Chinese naturalists and scientists are collecting scions to propagate. Therefore, hybridizing has not yet begun. What will the future bring? Can you envision a golden yellow camellia blooming several times a year under a live oak in your garden? This could be the camellia your grandchildren grow and treasure.

### ***C. amplexicaulis***

A hundred trees of this species were discovered in the foothills of Mt. Tam Dao in Vietnam. It also grows in the Yunnan Province in China and has been propagated for years in Vietnam. It has small purple red flowers with thin white edges that are borne singularly or in clusters at the tips of shoot and leaf axils. It generally blooms in summer and autumn yet can be induced to bloom all year. In Southern California it blooms from January until April. There are two clones—a long leaf and a short leaf form. The blooms are very similar, but the short leaf clone has a brighter red bud and slightly redder flower. It will be interesting to see if seedlings from these clones show any significant differences.

*C. amplexicaulis* is both a sound seed parent and a pollen parent. According to reports from Japan it crosses with a number of *C. japonica* cultivars. The most compatible cultivar in my breeding program is 'Tama Peacock'. Dan Charvet is using *C. amplexicaulis* in his breeding program in Fort Bragg in Northern

California. It seems to cross with *C. reticulata*. *C. amplexicaulis* has some cold-hardy properties which add to its potential in a hybridizing program.

### **What's Next?**

The key ingredient in fulfilling the promise of developing ever-blooming camellias is for more camellia growers to begin to do controlled crosses with these species. What is needed? The hybridizer personally will need patience, passion, and persistence, several plants of one or more of these species and several good seed-setting mother plants. I recommend the principles of hybridizing as follows:

1. Set an objective, e.g. repeat-blooming camellias
2. Use seed parents that can set seeds, e.g. singles, semidoubles, and loose peony forms but not full peony, rose form or formal double forms because they are female sterile.
3. Use a pollen parent that has one or more of the characteristics that match the objective, e.g. *C. azalea*, a repeat-blooming camellia.
4. Do only controlled crosses to increase probability of reaching the breeding goals.
5. In early summer place nylon bags on seedpods to insure all seeds are collected.
6. Germinate all resulting seeds by soaking them in warm water for 7 hours.
7. Place the seed in a germinating container such as a covered plastic container at least 7 inches in height filled to one-third with pre soaked peat moss.
8. When the seedling has two leaves move it to a pot with a camellia soil mix which is acidic, high in humus and loose with good drainage capabilities.
9. Create a "miniature green house" by placing a plastic bag supported by coat hangers or other wire over the pot to provide adequate protection and moisture
10. When the seedling has mature leaves and the weather is cool remove

the plastic cover and grow it like any other potted camellia.

11. Apply liquid fertilizer every two weeks, e.g. 4-12-4 works well for the first year or two.

Editor's note: Perhaps a lesson in patience will be at work here.



## POMONA VALLEY CAMELLIA SOCIETY

### 62nd Annual Show, La Verne

### February 20-21, 2010

#### Japonica—Large/Very Large

Best Single	'Carter's Sunburst'	Carol Stickley
Runner-up Single	'Guilio Nuccio Var.'	Carol Stickley
Court of Honor Single	'Han-Ling Snow'	Les & JoAnn Brewer
Best Tray of 3	'Snow Chan'	Carol Stickley
Runner-up Tray of 3	'Han-Ling Snow'	Les & JoAnn Brewer
Court of Honor Tray	'Kramer's Supreme'	Kristina Hooper
Best Tray of 5	'Royal Velvet'	Les & JoAnn Brewer
Runner-up Tray of 5	'Jonathan'	Carol Stickley
Court of Honor Tray of 5	'R. L. Wheeler'	Joe & Linda Tunner

#### Japonica—Medium

Best Single	'Dixie Knight Supreme'	Carol Stickley
Runner-up Single	'Haru-No-Utena'	Don & Marilee Gray
Court of Honor Single	'Nuccio's Cameo'	Marvin & Virginia Belcher
Best Tray of 3	'Magnoliaeflora'	Lindsey Brewer
Runner-up Tray of 3	'Nuccio's Carousel'	Les & JoAnn Brewer
Court of Honor Tray of 3	'C. M. Hovey'	Joe & Linda Tunner
Best Tray of 5	'Nuccio's Carousel'	Les & JoAnn Brewer
Runner-up Tray of 5	'Wildfire'	Brad & Lynn King
Court of Honor Tray of 5	'Fire Falls'	Joe & Linda Tunner

#### Japonica—Small

Best Single	'Hishi-Karaito'	Marvin & Virginia Belcher
Runner-up Single	'Ave Maria'	Jason Flick
Court of Honor Single	'Demi-Tasse'	Nancy Kress
Best Tray of 3	'Hishi-Karaito'	Nancy Kress
Runner-up Tray of 3	'Maroon and Gold'	Jac Fagundo
Court of Honor Tray of 3	'Tama Peacock'	Jason Flick
Best Tray of 5	'Hishi-Karaito'	Marvin & Virginia Belcher
Runner-up Tray of 5	'Red Hots'	Jane Brady
Court of Honor Tray of 5	'Maroon and Gold'	Carol Stickley

#### Japonica—Miniature

Best Single	'Man Size'	Nancy Kress
Runner-up Single	'Little Michael'	Carol Stickley
Court of Honor Single	'Lemon Drop'	Jim & Armida Wilkin
Best Tray of 3	'Lemon Drop'	Bob & Mary Sheriff
Runner-up Tray of 3	'Little Michael'	Don & Marilee Gray
Court of Honor Tray of 3	'Man Size'	Carol Stickley
Best Tray of 5	'Shikibu'	Joe & Linda Tunner



Runner-up Tray of 5	'Little Michael'	Don & Marilee Gray
Court of Honor Tray of 5	'Man Size'	Steve & Nancy Mefford

**Japonica—Special Culture**

Best	'Miss Charleston Var.'	Don & Marilee Gray
Runner-up	'Katie Var.'	Carol Stickley
Court of Honor	'Lady Laura'	Marvin & Virginia Belcher

**Reticulata or Reticulata/Hybrid**

Best Single	'Frank Houser Var.'	Jane Brady
Runner-up Single	'Dr. Clifford Parks'	Nancy Kress
Court of Honor Single	'LASCAs Beauty Var.'	Nancy Kress
Best Tray of 3	'Frank Houser'	Bob & Mary Sheriff
Runner-up Tray of 3	'Frank Houser Var.'	Steve & Nancy Mefford
Court of Honor Tray of 3	'Cornelian'	Michael Mathos
Best Tray of 5	'Valley Knudsen'	Joe & Linda Tunner
Runner-up Tray of 5	'Francie L.'	Gene Snooks
Court of Honor Tray of 5	'Valentine Day Var.'	Gene Snooks

**Special Culture**

Best	'Frank Houser Var.'	Carol Stickley
Runner-up	'Larry Piet'	Carol Stickley
Court of Honor	'Frank Houser'	Brad & Lynn King

**Non-Reticulata Hybrid—Medium/Large/Very Large**

Best	'Honeymoon'	Kristina Hooper
Runner-up	'Hot Stuff'	George & Karen Harrison
Court of Honor	'Kramer's Fluted Coral'	Les & JoAnn Brewer
Best Tray of 3	'Hot Stuff'	Steve & Nancy Mefford
Runner-up Tray of 3	'Coral Bouquet'	Beth Stone
Court of Honor Tray of 3	'Taylor's Perfection'	James Fitzpatrick
Best Tray of 5	'Darleen Stoner'	M. F. Stoner
Runner-up Tray of 5	'Taylor's Perfection'	James Fitzpatrick

**Non-Reticulata Hybrid—Miniature/Small**

Best Single	'Buttons 'N Bows'	Nancy Kress
Runner-up Single	'Spring Daze'	Jac Fagundo
Court of Honor Single	'Spring Daze'	Helen Maas
Best Tray of 3	'Coral Delight'	Marvin & Virginia Belcher
Runner-up Tray of 3	'Spring Daze'	Jac Fagundo
Court of Honor Tray of 3	'Buttons 'N Bows'	Nancy Kress
Best Tray of 5	'Spring Daze'	Jac Fagundo
Runner-up Tray of 5	'Buttons 'N Bows'	Bob & Mary Sheriff
Court of Honor Tray of 5	'Senritsu-Ko'	Brad & Lynn King

**Non-Reticulata Hybrid—Special Culture**

Best	'Spring Daze'	Don & Marilee Gray
Runner-up	'Coral Delight Var.'	Brad & Lynn King
Court of Honor	'High Fragrance'	Don & Marilee King

**Best Species**

'Egao'	Carol Stickley
--------	----------------

**Collector's Tray of 3 Mixed Varieties**

Best Tray	'Dr. Clifford Parks', 'Glen 40', 'Man Size'	Nancy Kress
-----------	--	-------------

Runner-up Tray	'Fashionata', 'Mrs. George Bell', 'Buttons 'N Bows'	Les & JoAnn Brewer
Court of Honor Tray	'Frank Houser', 'Nuccio's Carousel', 'Spring Daze'	Les & JoAnn Brewer
<b>Tray of 6 Nuccio's Introductions</b>		
Best Tray	'Maroon and Gold', 'Tata', 'Nuccio's Carousel', 'Nuccio's Jewel', 'Snow Chan', 'Red Devil'	Brad & Lynn King
Runner-up Tray	'Nuccio's Bella Rossa', 'Spring Formal', 'Freedom Bell', 'Buttons 'N Bows', 'Nuccio's Carousel', Nuccio's Pearl'	Carol Stickley
Court of Honor Tray	'Cherries Jubilee', 'Freedom Bell', 'Red Hots', 'Francie L. Var.', 'Royal Velvet Var.' 'Katie'	Brad & Lynn King
<b>Best Yellow Bloom</b>	'Dahlohnega'	Les & JoAnn Brewer
<b>Best Fragrant</b>	'High Fragrance'	Paul & Nancy Speaker
<b>Best Sport</b>	Sport of 'Cloisonne'	Carol Stickley
<b>Old Timers</b>		
Best	'Herme'	Wayne & Valla Walker
Runner-up	'Haru-No-Utena'	George & Karen Harrison
Court of Honor	'Purity'	Beth Stone
<b>Novice</b>		
Best	'Ragland Supreme'	Richard Amaya
Runner-up	'Ave Maria'	Hunter Flick
Court of Honor	'Glen 40'	Gina Grelling
<b>Intermediate</b>		
Best	'Silver Ruffles'	Pat Foltyn
Runner-up	'Covina'	Pamela Gilbraith
Court of Honor	'Kanjiro'	Melanie Little

•••••

### Show result corrections with apologies to the exhibitors:

#### Southern California Camellia Society Huntington Show

Best Collector's Tray of 3 Mixed Varieties was won by Les and JoAnn Brewer. The varieties should have included 'Frank Houser', 'Happy Harlequin' and 'Buttons 'N Bows' not 'Tom Thumb.'

#### Orange County Camellia Show

Miniature Court of Honor win should have been 'Lemon Drop' by Joe and Linda Tunner

---

# SOUTHERN CALIFORNIA CAMELLIA COUNCIL

## 52nd Camellia Show

February 27-28

### Japonica—Large/Very Large

Best Single	'Tomorrow Park Hill'	Carol Stickley
Runner-up Single	'Katie Var.'	Carol Stickley
Court of Honor Single	'Miss Charleston Var.'	Don & Marilee Gray
Best Tray of 3	'Han-Ling Snow'	Les & JoAnn Brewer
Runner-up Tray of 3	'Miss Charleston Var.'	Don & Marilee Gray
Court of Honor Tray of 3	'Katie Var.'	Carol Stickley
Best Tray of 5	'Snow Chan'	Joe & Linda Tunner
Runner-up Tray of 5	'C. M. Wilson'	Joe & Linda Tunner
Court of Honor Tray of 5	'Miss Charleston Var.'	Don & Marilee Gray
<b>Special Culture</b>		
Best	'Miss Charleston Var.'	Don & Marilee Gray
Runner-up	'Katie Var.'	Carol Stickley
Court of Honor	'Showtime'	James Fitzpatrick

### Japonica—Medium

Best Single	'Ragland Supreme'	Richard Amaya
Runner-up Single	'Nuccio's Cameo'	Bill Taylor
Court of Honor Single	'Nuccio's Carousel'	Les & JoAnn Brewer
Best Tray of 3	'Black Magic'	Les & JoAnn Brewer
Runner-up Tray of 3	'Nuccio's Carousel'	Joe & Linda Tunner
Court of Honor Tray of 3	'Eleanor Martin Sup.'	Les & JoAnn Brewer
Best Tray of 5	'Nuccio's Carousel'	Brad & Lynn King
Runner-up Tray of 5	'Betty Foy Sanders'	Joe & Linda Tunner
Court of Honor Tray of 5	'Fire Falls'	Joe & Linda Tunner
<b>Special Culture</b>		
Best	'Haru-No-Utena'	Marv & Virginia Belcher
Runner-up	'Prima Ballerina'	Carol Stickley
Court of Honor	'In The Pink'	Don & Marilee Gray

### Japonica—Small

Best Single	'Red Devil'	Stephen & Anne Dashiell
Runner-up Single	'Tinker Bell'	George & Karen Harrison
Court of Honor Single	'Dahlohnega'	Les & JoAnn Brewer

### Japonica—Miniature

Best Single	'Kewpie Doll'	Les & JoAnn Brewer
Runner-up Single	'Lemon Drop'	Les & JoAnn Brewer
Court of Honor Single	'Little Michael'	Les & JoAnn Brewer

### Japonica—Miniature/Small

Best Tray of 3	'Hishi-Karaito'	Tom & Dody Gilfoy
Runner-up Tray of 3	'Red Hots'	Don & Marilee Gray
Court of Honor Tray of 3	'Man Size'	Steve & Nancy Mefford
Best Tray of 5	'Hishi-Karaito'	Tom & Dody Gilfoy
Runner-up Tray of 5	'Red Hots'	Don & Marilee Gray
Court of Honor Tray of 5	'Little Michael'	Don & Marilee Gray

---

**Reticulata/Reticulata Hybrid**

Best Single	'Miss Tulare'	Jac Fagundo
Runner-up Single	'Frank Houser Var.'	Jac Fagundo
Court of Honor Single	'Frank Houser'	Jac Fagundo
Best Tray of 3	'Frank Houser Var.'	Steve & Nancy Mefford
Runner-up Tray of 3	'Frank Houser'	Les & JoAnn Brewer
Court of Honor Tray of 3	'Crimson Candles'	Joe & Linda Tunner
Best Tray of 5	'Frank Houser'	Tom & Dody Gilfoy
Runner-up Tray of 5	'Bravo'	Marv & Virginia Belcher
Court of Honor Tray of 5	'Frank Houser Var.'	Tom & Dody Gilfoy
<b>Special Culture</b>		
Best	'Frank Houser'	Don & Marilee Gray
Runner-up	'Hulyn Smith'	Marv & Virginia Belcher
Court of Honor	'Arcadia'	Carol Stickley

**Non-Reticulata Hybrid**

Best Single	'Super Star'	Jane Brady
Runner-up Single	'Honeymoon'	Kristina Hooper
Court of Honor Single	'Coral Delight Var.'	George & Karen Harrison
Best Tray of 3	'Island Sunset'	Don & Marilee Gray
Runner-up Tray of 3	'Golden Glow'	George & Karen Harrison
Court of Honor Tray of 3	'Jury's Yellow'	Joe & Linda Tunner
Best Tray of 5	'Coral Delight'	Marv & Virginia Belcher
Runner-up Tray of 5	'Lucky Star'	Joe & Linda Tunner
Court of Honor Tray of 5	'Sweet Emily Kate'	Steve & Nancy Mefford
<b>Special Culture</b>		
Best	'Taylor's Perfection'	James Fitzpatrick
Runner-up	'High Fragrance'	Marv & Virginia Belcher
Court of Honor	'Jackpot'	Brad & Lynn King

**Species**

Best	'Shishi-Gashira'	Carol Stickley
Runner-up	'Egao'	Julius & Dorothy Christinson
Court of Honor	'Botan-Yuki'	Jeffrey Thurnher

**Collector's Tray of 3 Mixed Varieties**

Best Tray	'Elegans Splendor', 'Happy Harlequin', 'Little Michael'	Don & Marilee Gray
Runner-up Tray	'Royal Velvet', 'Cherries Jubilee', 'Lipstick'	Les & JoAnn Brewer
Court of Honor Tray	'Elegans Champagne', 'Silver Chalice', 'Shiro Karako'	Jeffrey Thurnher

**Old Timer's Bloom**

Best	'Herme'	Beth Stone
Runner-up	'C. M. Hovey'	Joe & Linda Tunner
Court of Honor	'Magnoliaeflora'	Lindsey Brewer

**Best Fragrant**

'Koto-No-Kaori'	Carol Stickley
-----------------	----------------

**Best Seedling**

James & Armida Wilkin

**Best Sport**

Red sport of 'Betty Foy Sanders' Joe & Linda Tunner



---

**Novice**

Large/Very Large		
Best	'Silver Waves'	Cheryl Rossum
Runner-up	'C. M. Wilson'	Cheryl Rossum
Medium		
Best	'Ace O' Hearts'	Jeff Longshaw
Runner-up	'Ragland Supreme'	Richard Amaya
Court of Honor	'Debutante'	Jeff Longshaw
Tray of 3		
Best	'Eleanor McCowan'	Cheryl Rossum
Runner-up	'Scentsation'	Cheryl Rossum
Court of Honor	'Ace O' Hearts'	Jeff Longshaw

**Intermediate**

Large/Very Large		
Best	'Kramer's Supreme'	Richard Amaya
Runner-up	'Silver Waves'	Richard Amaya
Court of Honor	'Nuccio's Bella Rossa'	Brad & Lisa King
Miniature/Small/Medium		
Best	'Nuccio's Pearl'	Brad & Lisa King
Runner-up	'Fir Cone Var.'	Brad & Lisa King
Court of Honor	'Ragland Supreme'	Richard Amaya

**Floral Design**

Best Line Design		Helen Maas
Runner-up Line Design		Beth Stone
Best Mass Design		Beth Stone
Best Oriental Design		Fran Neumann
Runner-up Oriental Design		Helen Maas

**KERN COUNTY CAMELLIA SOCIETY****61st Camellia Show****March 6-7, 2010****Japonica—Large/Very Large**

Best Single	'Lady Laura'	Marv & Virginia Belcher
Runner-up Single	'Carter's Sunburst'	Robert Patterson
Court of Honor Single	'Kramer's Supreme'	Marv & Virginia Belcher
Best Tray of 3	'Miss Charleston Var.'	Don & Marilee Gray
Runner-up Tray of 3	'Marie Bracey'	Dean Shipman
Court of Honor Tray of 3	'Holly Bright'	Les & JoAnn Brewer

**Japonica—Medium**

Best Single	'Anita'	Don & Dolores Martin
Runner-up Single	'Silver Tower'	Don & Marilee Gray
Court of Honor Single	'Firedance Var.'	Don & Marilee Gray
Best Tray of 3	'Happy Harlequin'	Don & Marilee Gray
Runner-up Tray of 3	'Wildfire'	Doris Dermody
Court of Honor Tray of 3	'Nuccio's Carousel'	Don & Dolores Martin

**Japonica—Small**

Best Single	'Hishi-Karaito'	Marv & Virginia Belcher
Runner-up Single	'Irene'	Les & JoAnn Brewer

Court of Honor Single	'Maroon and Gold'	Les & JoAnn Brewer
Best Tray of 3	'Red Hots'	Jane Brady
Runner-up Tray of 3	'Pink Perfection'	Chris Boylan
Court of Honor Tray of 3	'Maroon and Gold'	Les & JoAnn Brewer
<b>Japonica—Miniature</b>		
Best Single	'Man Size'	Don & Marilee Gray
Runner-up Single	'Little Slam'	Don & Dolores Martin
Court of Honor Single	'Lemon Drop'	Doris Dermody
Best Tray of 3	'Man Size'	Don & Marilee Gray
Runner-up Tray of 3	'Aoi Sangosyo'	Jim & Dorothy McQuiston
Court of Honor Tray of 3	'Grace Albritton'	Les & JoAnn Brewer
<b>Reticulata/Reticulata Hybrid</b>		
Best Single	'Ruta Hagmann'	Don & Dolores Martin
Runner-up Single	'Frank Houser'	Helen Maas
Court of Honor Single	'Pharoah'	Maegan Allen
Best Tray of 3	'Frank Houser'	Helen Maas
Runner-up Tray of 3	'Queen Bee'	Don & Marilee Gray
Court of Honor Tray of 3	'Hulyn Smith'	Marv & Virginia Belcher
<b>Non-Reticulata Hybrid</b>		
Best Single	'Spring Daze'	Marv & Virginia Belcher
Runner-up Single	'Garden Glory'	Maegan Allen
Court of Honor Single	'Coral Delight Var.'	Don & Dolores Martin
Best Tray of 3	'Spring Daze'	Les & JoAnn Brewer
Runner-up Tray of 3	'Nicky Crisp'	Les & JoAnn Brewer
Court of Honor Tray of 3	'Holland Tulip'	Jim & Dorothy McQuiston
<b>Special Culture</b>		
Best	'Linda Carol'	Don & Marilee Gray
Runner-up	'Miss Charleston Var.'	Don & Marilee Gray
Court of Honor	'Prima Ballerina'	Don & Marilee Gray
<b>Old-Timer's Bloom</b>		
Best	'Hishi-Karaito'	Marv & Virginia Belcher
Runner-up	'Herme'	Maegan Allen
Court of Honor	'Purity'	Doris Dermody
<b>Collector's Tray of 3 Different Blooms</b>		
Best Tray	'Swan Lake', 'Miss Universe', 'Lemon Drop'	Don & Marilee Gray
Runner-up Tray	'Easter Morn', 'Nicky Crisp', 'Sweet Jane'	Don & Marilee Gray
Court of Honor Tray	'Fashionata', 'Nuccio's Carousel', 'Ole'	Les & JoAnn Brewer
<b>Novice</b>		
Best Large/Very Large	'Kramer's Supreme'	Estelle Horcasites
Runner-up Large/Very Large	'Katie'	Dean Shipman
Best Medium	'Margaret Davis'	Judith Domingos
Runner-up Medium	'Nuccio's Pearl'	Judith Domingos
<b>Walter Stiern Trophy</b>	'Margaret Davis'	Judith Domingos

**PACIFIC CAMELLIA SOCIETY**  
**6th Annual Late Bloomers Show**  
**March 14-15, 2010**

**Japonica—Large/Very Large**

Best Single	'Royal Velvet'	Nancy Kress
Runner-up Single	'Katie Var.'	Carol Stickley
Court of Honor Single	'Kramer's Supreme'	Gary Shipman
Best Tray of 3	'Show Time'	Joe & Linda Tunner
Runner-up Tray of 3	'Silver Waves'	Peg Rahn
Court of Honor Tray of 3	'Miss Charleston Var.'	Don & Marilee Gray

**Japonica—Medium**

Best Single	'Black Magic'	Maegan Allen
Runner-up Single	'Ragland Supreme'	Richard Amaya
Court of Honor Single	'Silver Chalice'	Carol Stickley
Best Tray of 3	'Yours Truly'	George & Karen Harrison
Runner-up Tray of 3	'Black Magic'	Maegan Allen
Court of Honor Tray of 3	'C. M. Hovey'	Joe & Linda Tunner

**Japonica—Miniature/Small**

Best Single	'Hishi-Karaito'	Jeffrey Thurnher
Runner-up Single	'Red Hots'	Jane Brady
Court of Honor Single	'Lemon Drop'	Carol Stickley
Best Tray of 3	'Man Size'	Carol Stickley
Runner-up Tray of 3	'Pink Perfection'	Robert & Mary Sheriff
Court of Honor Tray of 3	'Shikibu'	Joe & Linda Tunner

**Reticulata/Reticulata Hybrid**

Best Single	'Harold L. Paige'	Nancy Kress
Runner-up Single	'Dr. Clifford Parks'	Nancy Kress
Court of Honor Single	'Miss Tulare'	Nancy Kress
Best Tray of 3	'Frank Houser'	Helen Maas
Runner-up Tray of 3	'Harold L. Paige'	Nancy Kress
Court of Honor Tray of 3	'Dr. Clifford Parks'	Nancy Kress

**Non-Reticulata Hybrid**

Best Single	'Spring Daze'	Helen Maas
Runner-up Single	'Pink Dahlia'	Helen Maas
Court of Honor Single	'Honeymoon'	Nancy Kress
Best Tray of 3	'Honeymoon'	Nancy Kress
Runner-up Tray of 3	'Pink Dahlia'	Jac Fagundo
Court of Honor Tray of 3	'Buttons 'N Bows'	Robert & Mary Sheriff

**Collector's Tray of 3 Mixed Varieties**

Best Tray	'Frank Houser Var., 'Prima Ballerina', 'Little Michael'	Don & Marilee Gray
Runner-up Tray	'Harold L. Paige', 'Cherries Jubilee', 'Maroon and Gold'	Brad & Lynn King
Court of Honor	'Dr. Clifford Parks', 'Glen 40', 'Freedom Bell'	Nancy Kress

**Novice**

Best Single	'Lucy Stewart'	Joey Goldfarb
Runner-up Single	'Cloisonne'	Joey Goldfarb
Court of Honor Single	'Spellbound'	Joey Goldfarb

---

**Intermediate**

Best Single	'Snowman'	Ben McMahan
Runner-up Single	'Ace O' Hearts'	V. Thorpe
Court of Honor "Single"	'Hishi-Karaito'	Robbe Brogna
Best Tray of 3	'Ace O' Hearts'	Jeff Longshaw

**Floral Arrangements**

Best Line Design	Helen Maas
Runner-up Line Design	Fran Neumann
Best Mass Design	Fran Neumann
Best Oriental Design	Helen Maas
Runner-up Oriental Design	George & Karen Harrison



**CAMELLIA SOCIETY OF SACRAMENTO**  
Sacramento Memorial Auditorium  
86th Annual Show  
March 6 and 7, 2010

<b>Outstanding Flower of Show</b>	'Junior Prom'	Don & Joan Lesmeister
<b>Sweepstakes—Most Blue Ribbons</b>		Don & Mary Bergamini
<b>Runner-up Sweepstakes</b>		Don & Joan Lesmeister

**Japonica—Very Large**

Best Single	'Happy Birthday'	Robert & Linda Ehrhart
Runner-up Single	'Elaine's Betty'	Don & Joan Lesmeister
Best Tray of 3	'Veiled Beauty'	Don & Joan Lesmeister

**Japonica—Large**

Best Single	'Junior Prom'	Don & Joan Lesmeister
Runner-up Single	'Katie Var.'	Don & Mary Bergamini
Best Tray of 3	'Margaret Davis'	Zac Warren

**Japonica—Medium**

Best Single	'Red Devil'	Julie Vierra
Runner-up Single	'Nuccio's Pearl'	Robert & Linda Ehrhart
Best Tray of 3	'Feathery Touch'	Harlan Smith

**Japonica—Small**

Best Single	'Little Babe Var.'	Gary & Carol Schanz
Runner-up Single	'Cabernet'	Don & Mary Bergamini
Best Tray of 3	'Tama-No-Ura'	Bob & Nancy Steele

**Japonica—Miniature**

Best Single	'Little Man'	Harlan Smith
Runner-up Single	'Night Rider'	Julie Vierra
Best Tray of 3	'Pink Perfection'	Irene Moore

**Japonica**

Best Tray of 5 Boutonnieres	'Cabernet'	Don & Mary Bergamini
Best Tray of 5 under 4 1/2"	'Nuccio's Carousel'	Don & Joan Lesmeister
Best Tray of 5 over 4 1/2"	'Edmund B.'	Robert & Linda Ehrhart



Best Tray of 11	'Sea Foam'	Robert & Linda Ehrhart
<b>Reticulata/Reticulata Hybrid</b>		
Best Single Very Large	'Barbara Goff'	Barbara Goff
Runner-up Single V/Large	'Frank Houser Var.'	Don & Joan Lesmeister
Best Single Med/Large	'Valentine Day'	Don & Joan Lesmeister
Runner-up Single Med/Lg	'Valley Knudsen'	Julie Vierra
Best Tray of 3	'Frank Houser'	Don & Joan Lesmeister
Best Tray of 5	'Frank Houser Var.'	Robert & Linda Ehrhart

### Non-Reticulata Hybrid

Best Single Large	'Hot Stuff'	Bob & Joanne Logan
Runner-up Single Large	'Tom Perkins'	Don & Joan Lesmeister
Best Single Medium	'Coral Delight Var.'	Don & Mary Bergamini
Runner-up Single Medium	'Pink Dahlia'	Mr. & Mrs. John McDaniel
Best Tray of 3	'Dreamboat'	Don & Mary Bergamini
Best Tray of 5	'Coral Delight'	Robert & Linda Ehrhart
Best Tray of 11	'Nicky Crisp'	Don & Joan Lesmeister

### Collections

Best Tray of 5 Miniature/Small		Bob & Nancy Steele
Best Tray of 3 Different Blooms		Don & Joan Lesmeister
Best Tray of 5 Different Blooms		Don & Joan Lesmeister

### Best Seedling

Runner-up Seedling		Robert & Linda Ehrhart
Best Spray/Stem	'Nuccio's Carousel'	Natalia Haness
Best Fragrant Bloom	'Scentuous'	Don & Mary Bergamini
Best Yellow/Cream Bloom	'Senritso-Ko'	Don & Mary Bergamini
Best Bloom/Sacramento Member	'Elizabeth Weaver'	Harlan Smith
Best Old Timer's Bloom	'Purity'	Bob & Nancy Steele
Best White Japonica	'Man Size'	Julie Vierra
		Ron & Arlene Morrison

### Youth

Best Single Large	'Nuccio's Carousel'	Matthew Enwia
Best Single Medium	'In the Pink'	Elizabeth Bulcock
Best Single Miniature	'Man Size'	Jacob Enwia
Best Single Very Large	'Elegans Splendor'	Ava Urbina

### Intermediate

Best	'Junior Prom'	P. Warner
Runner-up	'Tri Color'	Shellie Rae Leverett



An optimist is the human personification of spring.  
—Susan J. Bissonette

Never yet was a springtime, when the buds forgot to bloom.  
—Margaret Elizabeth Sangster

Kind hearts are the gardens; kind thoughts are the roots; kind words are the  
flowers; kind deeds are the fruits.  
—English Proverb

## SPECIAL DAY AT THE L.A. COUNTY ARBORETUM

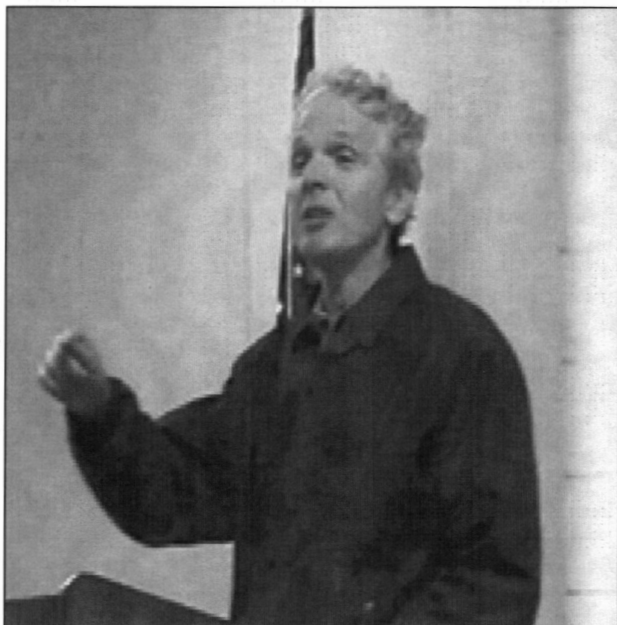
Nancy Kress  
La Verne, California

On a brisk, rainy April day this year, phone calls volleyed back and forth between Southern California Camellia Society President Jim Fitzpatrick and the CEO of the L. A. County Arboretum and Botanic Garden, Richard Schulhof. Is it on? Is it off? They decided that members of the Southern California Camellia Society were a hardy lot. A little rain wouldn't deter the Society's planned tour of the Arboretum's beautiful gardens. As the members arrived for their final meeting of the 2010 camellia season, the gray skies parted and the sun shone through.

On that cool, crisp evening, more than thirty-five Society members joined our host Richard Schulhof for a private, guided tour of the Arboretum's diverse flora. Our tram maneuvered the winding roads beginning in Madagascar's prehistoric tree forest, through Australia's Outback, over the Raymond Hill earthquake fault, past South America's shocking pink *Tabebuia* trees, up through California's native grove, and back down to Lucky Baldwin's quaint Queen Anne cottage. Midway through our tour, members delighted at the breathtaking view of the San Gabriel Mountains to the north. Our guide educated us on topics as diverse as horticulture, animal husbandry, California history, anthropology,

architecture, and geology—teaching us a little bit about everything.

Back at Ayers Hall, Mr. Schulhof regaled the members with stories about past and future plans for the Arboretum. Currently a Korean Garden is in development near the Meyberg Waterfall and across from the Catawampus. Of particular interest to camellia enthusiasts, Mr. Schulhof asked Society members to



Q & A with Richard Schulhof

assist in the Arboretum's plan to identify and propagate camellias consistent with the time period of the Queen Anne Cottage—the late 1800's. Immediately, our thoughts jumped to 'Pink Perfection', 'Magnoliaeflora', and 'Alba Plena'. However, we should also consider those handsome examples in the Higo Family. Mr. Schulhof's invitation provides a once-in-a-lifetime opportunity to include a member's favorite "old-timer" in the Arboretum's future collection.

---

collection. Contact members of the Southern California Camellia Society for additional information.

No question and answer session would be complete without a discussion of the Arboretum's most famous residents—the Peacocks. Visitors cannot help but notice these magnificent creatures, both in sight and sound. This day was no exception with cooperative males freely exhibiting their jewel-toned plumes. Recently, the community of approximately 150 inhabitants received identification bands. Through DNA testing, a researcher genetically linked one male peacock to most, if

not all, other peacocks on the grounds. So, the next time you visit the Arboretum, keep an eye out for Peacock No. 47. He'll be easy to spot. He's the one surrounded by the flock of adoring females.

We would like to thank CEO Richard Schulhof for capping off our successful camellia season with a much-appreciated tour of his 127-acre garden.

The Los Angeles County Arboretum and Botanic Garden is located at 301 N. Baldwin Ave., Arcadia, California (626) 821-3222. [www.gardenarboretum.org](http://www.gardenarboretum.org).



In the previous *Camellia Review* there was a recipe for Camellia Mix that Gene Snooks recommends. The following recipes were found in a *Camellia Review* from the 70's. If they were good enough to print at that time, perhaps they may be good additions to your recipe box—and today we can buy our cheese already grated!

#### POTATO CASSEROLE RECIPE

- 2 pounds frozen hash browns, defrosted
- 1/2 cup melted butter
- 1 tsp salt
- 1/4 tsp pepper
- 1 can condensed cream of chicken soup
- 1/2 cup chopped onion
- 1 pint sour cream
- 3 cups grated cheddar cheese

Topping: Mix 1 1/2 cups crushed corn flakes and 1/4 cup melted butter  
Spread on top of potatoes. Bake at 350° for 45 minutes.

#### CHILIES AND CHEESE RECIPE

- 1 7 oz can green chilies
- 3 eggs
- 3 tbs flour
- 1 can evaporated milk
- 1 can tomato sauce
- 1 can tomato salsa
- 1 lb. jack cheese
- 1 lb cheddar cheese

Grate cheese and make layers of grated cheese and green chilies  
in a 9 x 13 buttered dish.

Mix milk, eggs and flour – pour over cheese – bake at 375° for 25 minutes  
Mix tomato and salsa. Pour over top and bake 10 min. longer.

---

## ANOTHER PERSPECTIVE OF YESTERDAY, TODAY AND TOMORROW

Bradford King  
Arcadia, California

I believe the importance of Yesterday is our personal memories and history. Memories are stored treasures—marriage, the birth of a child, achievements large and small. What was healthy and satisfying yesterday helps in making choices today. On the other hand, we also can learn from yesterday's mistakes and less than satisfying experiences. When we repeat that which is unsatisfying, self-defeating or unhealthy we are in trouble. However, this is an article about camellias, so let's switch gears.

Some of yesterday's great camellias are still great today. For example, during the Orange County Society visit to Nuccio's in March a wonderful large rose red bloom with white blotches and wavy petals caught the group's attention. It was 'Cornelian' one of the original twenty *C. reticulata* cultivars from Yunnan China. This cultivar has been in the United States since 1948; it has been grown for its beauty in China for hundreds of years. We know it as 'Cornelian' but it was imported as 'Damanao' which means "Large Cornelian." It grows vigorously with large "reticulated" leaves. It has been widely propagated throughout the world because of its wonderfully variegated flowers and excellent growth habit. Stirling Macoby, the noted Australian garden author, wrote "It is a spectacular bloom . . . a jewel of a flower." See back cover.

A key question to a healthy life is to answer these kinds of questions—What do I want to do today? What do I need to do today? What can be done tomorrow? Your answers lead to a focused life and a sense of accomplishment and well being. Drifting through life has an appeal but it reminds me of those addicts who drift aimlessly in a pleasant unproductive haze. It may seem relaxing but most often, when one

looks deeply inside, it is an escape from pain and anxiety. One such person I treated "awoke" at age 50 and wondered where his life had gone and what tomorrow would bring. Finally off drugs but profoundly depressed, it was finally time for him to confront the question of what to do today? No more procrastination and no more self-medication because it is never too late to live.

What has this to do with camellias? Nothing and everything! Nothing because the answers may have nothing to do with camellias, but old and young will need to answer the "Questions" to have a meaningful productive life. I think gardening, especially the camellia hobby, is one of the best ways to answer these "Questions" because there are physical, intellectual, social, creative and spiritual opportunities at play. In addition, people need vitamin D for robust physical health; daily exposure to twenty minutes of natural sunlight is an excellent way to obtain this needed vitamin. However, this is enough musing about "Today." What about "Tomorrow?"

On the March visit to Nuccio's Nurseries the Orange County Camellia Society members saw several full-grown fifteen foot *C. japonica* in full bloom surrounded by hundreds of potted camellias and azaleas. They looked terrific! I remember seeing them many times previously but had never paid attention to them and asked, "What are they?" "Tomorrow," Jude Nuccio answered. The large to very large strawberry red semidouble and peony form flowers were spectacular. There were hundreds of flowers on the upright spreading trees that reached the very top of the lath structure. "Tomorrow" was registered in 1953 by Tick Tock Nurseries in Georgia and has mutated seventeen times. This makes it one of the most



prolific sporting camellias. Mutations occur in some japonica cultivars, a few sasanqua but, as far as we know, no reticulata camellias. The reasons for sporting lie deeply buried in camellia genetics.

Most of the 'Tomorrow' mutations were caught by camellia growers in the South where it originated. However, three mutations are from California. The most well known is 'Tomorrow Park Hill', a sport of 'Tomorrow Variegated'. It was discovered on Ralph Peer's Hollywood estate, "Park Hill." It is a large to very large light soft pink with deeper pink petal edges and lovely white variegation. It is grown widely and often wins crystal at camellia shows in the treated and untreated categories! Ralph Peer was an avid camellia collector and the founder and first president of the Los Angeles Camellia Society in the 1950's. His greatest camellia achievement was the importation of reticulata camellias into the United States from China in 1948. He shares this honor with Descanso Gardens.

In 1984 John Movich of La Verne California caught a white sport of 'Tomorrow'. 'Tomorrow White' is a large to very large flower but has not been seen frequently in recent years at camellia shows. John and Sonia Movich were active in the Pomona Valley Camellia Society and raised their family in La Verne.

'Tomorrow's Tropic Dawn' is a second generation sport. It mutated from 'Tomorrow's Dawn', a sport of 'Tomorrow'. In 1967 R. N. Merino of

Fresno introduced this large to very large white flower with its occasional red lines and dashes. An interesting characteristic is that as the bloom ages the white fades to blush. It is available at Nuccio's Nurseries. (See back cover)

What will tomorrow bring us from Nuccio's? 'Princess Masako' is expected to be available in the fall of 2010. It is a lovely large white with a red border with both small and large red stripes. This japonica is a semidouble (lotus-form) to loose peony flower with tubular split stamens. It is a mid to late season bloomer. The leaves are medium sized and narrowly elliptic. The plant grows upright and spreading. It was named and released by Soshin Hirai in 1989 from Saitama Prefecture, Japan and is a mutation of 'Ikari-Shibori'. Named for the Crown Princess Masako of Japan, wife of Crown Prince Naruhito, the first son of Emperor Akihito and Empress Michiko who is a member of the Japanese Imperial Family. (See back cover)

Yesterday teaches us what to do today. Today is the immediate reflection of ones current life. In Shakespeare's play, Macbeth reflects on his wife's death and his indifference to this loss in his famous "tomorrow" soliloquy in Macbeth—his was a tragic and depressing view of life.

One wonders, if Macbeth had paid more attention to his day-to-day choices, would he have been more fulfilled. If so, symbolically then, his garden would have thrived and his camellias bloomed beautifully!



In the spring, at the end of the day, you should smell like dirt.

—Margaret Atwood

June is bustin' out all over.

—Oscar Hammerstein II, 1945

Coffee. Garden. Coffee. Does a good morning need anything else?

Betsy Cañas Garmon

[www.wildthymecreative.com](http://www.wildthymecreative.com)

## 2010 WINNERS IN CALIFORNIA

Don Bergamini  
Martinez, California

The outstanding varieties this year were 'Frank Houser' and 'Frank Houser Variegated'. These two cultivars won a total of 42 times in the single and multiple classes. They really dominated in the multiple classes. Other cultivars that did well this year were 'Coral Delight Var.', 'Rudy's Magnoliaeflora', 'Spring Daze', 'Nuccio Carousel' and 'Red Hots'.

Some newer cultivars that won for the first time this year or did well with multiple wins were 'Bryanna Nicole', 'Just Peachy', 'Toichi Domoto', 'Happy Harlequin', 'Darleen Stoner', 'Chris Bergamini', 'Barbara Goff', and 'Miss Lillian'.

Congratulations to all who won trophies this year and hope to see you on the camellia circuit next year.

### LARGE/VERY LARGE JAPONICA SINGLES

'Junior Prom'	7
'Katie Var.'	6
'Miss Charleston Var.'	5
'Royal Velvet'	4
'Elegans Champagne'	3
'Han-Ling Snow'	3
'Carter's Sunburst'	2
'Dusty'	2
'Elegans Splendor'	2
'Katie'	2
'Lady Laura'	2
9 others with 1 each	

### MEDIUM JAPONICA SINGLES

'Rudy's Magnoliaeflora'	7
'Nuccio's Carousel'	6
'Miss Charleston Var.'	5
'Haru-No-Utena'	3
'Nuccio's Cameo'	3
'Toichi Domoto'	3
'Betty Foy Sanders'	2
'Dixie Knight Supreme'	2
'Elaine's Betty'	2
'Happy Harlequin'	2
'Margaret Davis'	2
'Ragland Supreme'	2
24 others with 1 each	

### SMALL (Any Species) SINGLES

'Spring Daze'	9
'Red Hots'	6
'Cabernet'	4
'Hishi-Karaito'	4
'Maroon and Gold'	4
'Alison Leigh Woodroof'	2
'Ave Maria'	2
'Ave Maria Var.'	2
'Red Devil'	2
17 others with 1 each	

### MINIATURE (Any Species) SINGLES

'Man Size'	4
'Kewpie Doll'	3
'Lemon Drop'	3
'Flynn Sans'	2
'Little Michael'	2
'Night Rider'	2
14 others with 1 each	

### RETICULATA/RETICULATA HYBRID SINGLES

'Frank Houser Var.'	12
'Frank Houser'	7
'Harold L. Paige'	5
'Dr. Clifford Parks'	4
'Miss Tulare'	3
'Black Lace 2'	
'Emma Gaeta Var.'	2
'Linda Carol'	2
'Ruta Haggmann'	2
23 others with 1 each	

### NON-RETICULATA HYBRID SINGLES

'Coral Delight Var.'	8
'Waltz Time Var.'	5
'Julie Var.'	4
'Buttons n' Bows'	3
'Hot Stuff'	3
'Lucky Star'	3
'Taylor's Perfection'	3
'First Blush'	2
'Honeymoon'	2
'Pink Dahlia'	2
'Senritsu Ko'	2
12 others with 1 each	

### SPECIES SINGLES

'Shibori Egao'	5	'Lemon Drop'	2
'Egao'	4	'Little Michael'	2
4 others with 1 each		'Night Rider'	2
		'Shikibu'	2
<b>JAPONICA MULTIPLES</b>		'Tama-No-Ura'	2
'Nuccio's Carousel'	10	11 others with 1 each	
'Royal Velvet'	7		
'Magnoliaeflora'	6	<b>RETICULATA / RETICULATA</b>	
'Han-Ling Snow'	4	<b>HYBRID MULTIPLES</b>	
'Prima Ballerina'	4	'Frank Houser'	14
'Snow Chan'	4	'Frank Houser Var.'	9
'Betty Foy Sanders'	2	'Valley Knudsen'	4
'Black Magic'	2	'Terrell Weaver'	2
'C. M. Wilson'	2	6 others with 1 each	
'Fire Dance Var.'	2		
'Grand Marshal'	2	<b>NON-RETICULATA MULTIPLES</b>	
'Guilio Nuccio'	2	'Buttons n' Bows'	3
'Happy Harlequin'	2	'Coral Bouquet'	3
'Junior Prom'	2	'Coral Delight'	3
'Miss Charleston Var.'	2	'Freedom Bell'	3
'Wildfire'	2	'Taylor's Perfection'	3
32 others with 1 each		'Coral Delight Var.'	2
		'Island Sunset'	2
<b>SMALL / MINIATURE (Any Species)</b>		'Joe Nuccio'	2
<b>MULTIPLES</b>		'Nicky Crisp'	2
'Red Hots'	8	'Waltz Time Var.'	2
'Man Size'	5	10 others with 1 each	
'Spring Daze'	5		
'Tama Peacock'	5	<b>SPECIES MULTIPLES</b>	
'Hishi-Karaito'	4	'Egao'	2
'Pink Perfection'	4	2 others with 1 each	
'Maroon and Gold'	3		
'Spring Festival'	3		

• • •

## CAMELLIA HOBBYISTS WHO WON IN THE 2010 SOUTHERN CALIFORNIA SHOWS

While Don Bergamini was compiling the previous list of winning camellias, Don Gray, the newest member of the Board of Directors of the Southern California Camellia Society, was busy compiling a list of the top exhibitors in the nine 2010 Southern California camellia shows. And the winners are —

Les and JoAnn Brewer  
 Carol Stickley  
 Brad and Lynn King  
 Don and Marilee Gray  
 Jac Fagundo  
 George and Karen Harrison

**CONGRATULATIONS TO ALL OUR WINNERS and  
 SPECIAL CONGRATULATIONS TO THESE TOP SIX!**

## TEN MUST-HAVE CAMELLIAS FOR SAN DIEGO COUNTY

Dean Turney, 2009 President  
San Diego Camellia Society

The following is a list of ten camellias that will not only thrive in San Diego County but will supply you with many beautiful blooms. They are hardy, ready to bloom and willing to survive even some mistreatment. They are 'Silver Waves', 'Guilio Nuccio', 'Tiffany', 'Mrs. D. W. David', 'Dr. Clifford Parks', 'Valentine Day', 'Prima Ballerina', 'Margaret Davis', 'High Fragrance' and 'Minato-No-Akebono'. With these ten plants you should have blooms from late November until March.

As with any plant, one must give camellias a good start at life—get them "established."

This includes right location, soil, nutrients and water. The true hardiness of camellias can be realized once they have become established. . . . Take a walk through one of San Diego's older neighborhoods. You will find camellias taller than the house, covered in blooms with shiny green foliage. . . . You could take a chainsaw to that camellia and cut it off a foot above the ground, give it some water and it will grow back. . . . You could take it home with you, plant it in your garden and it would survive. Once "established," camellias are drought tolerant, low maintenance and disease resistant.

How do camellias become "established?" Location, location, location! They need indirect bright sunlight—the north side of the house, under tall trees or lath-covered patio. They say the redder the bloom the more sun a camellia can withstand. 'Ace o' Hearts' can take full sun as will camellias in the species *sasanqua*, often sold as "sun camellias."

After location, one must be aware of the soil into which the plant is to be placed. Camellias want it acidic

and they want that acid from mulch. You want to plant it with mulch. You want to top dress it with mulch. And you want to re-apply that mulch as it breaks down. The mulch will help control the moisture, it will reduce the amount of water needed to achieve "established" and it will feed the camellia—all of which in the long run, means less time, work and money. The mulch will keep the plant healthy and, therefore, more disease-free.

Camellias are not bog plants! They breathe through their roots. They are very shallow rooted. This makes them easy to transplant but also explains why they suffer if planted too deep or in heavy clay soil. With all that good mulch you are using to plant your camellia you can expect the plant to sink as the mulch decays. Therefore, plant camellias above the level of your surrounding ground; about two inches is good.

Now it is time to sit back and let your camellia do its "establishing" thing. You will be required to intervene at least once a week if the plant is not on automatic watering. You want to keep it moist but not soggy. Some plants require frequent feeding but not camellias. Do not over feed your camellias; you will be working too hard and they will not appreciate the attention! The most you need to do is feed cottonseed meal and a little iron three times a year, but not during football season. The first feeding should occur around Saint Patrick's Day (think green). Second feeding near Memorial Day and the final feeding the Fourth of July. Start watching for the buds to form at the leaf joints.

If I had to sell off all my camellias except one, I would have to keep my favorite 'Valentine Day'. I like this *reticulata* best when it looks like a

pink rose on a pink plate. 'Dr. Clifford Parks' is another favorite of mine and has the same open growth habit as 'Valentine Day'. Plant your reticulatas in a location that will impress your winter guests.

Japonicas tend to grow densely and make great hedges that bloom. They can be great for blocking the neighbors or unsightly objects. They can be kept short or allowed to become small trees. Prune them in March to fit your space and keep them there. As with all happy camellias they will keep their leaves all year and, because of their shallow roots, they will not damage your foundation. They like to be a little root-bound so they are great for planters. Only ten

feet between you and your neighbor—think camellias! Because they do well in San Diego, the ones I mentioned initially have become my favorite japonicas.

Disbud your camellias if you want bigger blooms. Watch for scale and mites. If you find some, you can remove the affected leaves, spray with soapy water or paraffin oil or, if you must, use pesticide as directed. Neither scale nor mites will kill your plant overnight so don't fret. You have a while to solve the problem. If you have questions, remember the San Diego Camellia Society has its annual show and sale the first full weekend in February. We will answer questions other times if you contact us.

## A BRIEF HISTORY OF CAMELLIA REVIEW

Harold E. Dryden

### The Camellia Review Vol. 40, No.1

The founding fathers of the Southern California Camellia Society decided early in its history that the Society should have a bulletin. The earliest copy of a bulletin in the Society's files is Volume V, number 3, dated January 1945. Since the Society's first meeting, a dinner meeting, was in January 1940 it is evident that not much time was lost in getting a bulletin under way. None of the people who were involved in those early days are around so we must use conjecture in regard to the early years. The January 1945 issue, with the title Southern California Camellia Society Official Bulletin, is a four-page leaflet containing news items of the Society and full information regarding the next Society meeting. . . .

Camellia Review was born in October 1950. In the issue of this date the *Southern California Camellia Bulletin* became *Camellia Review* and this name has carried to the present. With the new name came color pictures on the cover. 'Joseph Pffingstl' was the first camellia to be honored in

this manner. Arthur S. Kane was Editor and Dr. John Clairmont was Chairman of the Society's Camellia Review Committee. I mention Dr. Clairmont because he played a part in the development of *Camellia Review* that is known to few people in the Society. He was Chairman of the Committee during Arthur Kane's editorship (2 years) and during Elizabeth Beebe's editorship of six years except during his two years as President of the Society (1951-1953). I remember the two years in which I was President (1953-1955) how active he was in working with "Liz" to maintain the standards of *Camellia Review*.

I took over in 1960 and was at the helm for fourteen years. By the time I took over, *Camellia Review* had established its reputation. Because of it and *Camellia Nomenclature*, the Society had established a reputation that brought members to the Southern California Camellia Society from all parts of the camellia world. This was not accidental, but rather was the result of a policy that was adopted

early in the Society's history' namely, to have a publication that was directed to all the people who were growing camellias, novice and expert alike. This policy is reflected in the type of material that *The Bulletin* contained and which *Camellia Review* has carried since its inception. It is summarized in the editorial that I wrote for the first issue after I took over in October 1960 when I wrote: "Since the Society headquarters are in Southern California, we shall have much to say about Southern California subjects

and happenings—society affairs, camellia culture, camellia introductions, etc. We shall undertake to do this so that it will be of interest to our local people and those who live elsewhere. Likewise, we shall endeavor to obtain assistance from people in the South and elsewhere to the end that Californians are informed about what is going on in the camellia world outside our state. In doing this, we shall undertake to bring people into the picture, because people plus camellias are what make the camellia hobby interesting." . . .

## TOPSOIL—OUR DWINDLING HERITAGE

Mary Marshdale

*The Camellia Review*, Vol. 40, Issue No. 2, 1978

If all the topsoil on earth were spread equally over the land, it would be only 6" deep. Yet topsoil must grow all the food for man and animals plus the forests needed to build man's shelter.

Nature takes about 500 years to build an inch of topsoil. Man's careless ways can destroy this same inch in a few years. It has been estimated that in about 200 years of farming in the United States, over 60 per cent of its topsoil has been destroyed.

When our country was first settled, the rich virgin soil contained all the minerals and trace elements to nourish crops naturally. As man depleted the soil, he moved west, until at last there were no more lands to despoil. Researchers today have discovered a direct link between poor topsoil, malnutrition, poor mental health and violent crime.

Conservation and intelligent use of topsoil becomes the duty of all of us, whether we live in the city or country. From the housewife who recycles her papers, buries her garbage and composts her leaves to the farmer who grows a cover crop to enrich his soil and prevent erosion; to the city that

reclaims its sewage and waste' to the nation that protects its forests, parks and wildlife—all of us are in this movement together.

Our recent rains, which flooded our rivers and filled our steams with mud and debris, are a good example of what is happening to our topsoil. Land that is properly protected with grass or tree cover, does not melt away. An easy test can prove this fill two nursery flats, one with bare soil, the other with sod. Tip them on an angle so they will drain uniformly and pour a quart of water over each one. The water from the bare soil will run through quickly and be filled with mud. The water from the sod-covered soil will not only drain slowly, but the water flowing from it will be clear.

Topsoil conservation includes reforestation, grassed waterways and watersheds, contour tillage, trip cropping, terracing, diversion ditches, mulches and windbreaks. We need to look at our gardens and farms to see which step is most needed.

One farmer in our area arranged for the city street sweeper to dump his leaves on his land. Each year he has disked this in, and now his land is so spongy with humus that he can walk

on it without muddying his feet. He uses no commercial fertilizer and few sprays, yet grows fine produce. He is a good guardian of our topsoil.

Galileo, who mapped the stars, was mindful of the importance of good soil. He said, "What greater folly can there be than to call gems, silver and gold precious and the earth and dirt vile? Do not these persons consider that if there should be as great a scarcity of earth as there is of

jewels and precious metals, there would be no prince but would gladly give a heap of diamonds and rubies and many wedges of gold to purchase only so much earth as should suffice to plant a jasmine in a little pot."

*Editor's not: At the time of this writing, Mary Marshdale had fairly recently moved from Southern California to the Pacific Northwest.*



**INDEX OF CAMELLIA REVIEW**  
**Volume 71—September 2009-June 2010**

A New Category in the 2010 Camellia Shows .....	1/4
Don Bergamini, Master Recorder .....	1/5
Meet the New President of the Southern California Camellia Society .....	1/6
Landscaping with Sun Camellias, Bradford King .....	1/7
Camellia Questions .....	1/10
The Camellia Capital, Donald D. Lesmeister .....	1/11
Listen to the Leaves, Bill Donnan .....	1/12
A Review of Information about Spider Mites on Camellias, Dr. Eldon W. Lyle .....	1/15
An Idea in Time for Christmas, Mrs. William J. Roth .....	1/17
Tough Taproot Camellias Don't Mind Drought, Kevin Connolly .....	1/18
The List of Nuccio's Introductions .....	1/2
Outline of Procedures Followed in the Production of New Varieties, Dan Charvet .....	2/4
Quiz for People who Know Everything .....	2/5
The Wonderful World of Sports, Bradford King .....	2/6
A Nurseryman's Goals, Dan Charvet .....	2/8
Nuccio's Nurseries Celebrate Their Diamond Jubilee, Bradford King .....	2/12
America's Only Tea Plantation, Bradford King .....	2/15
From the Archives	
Bare Rooting Camellia Plants, Harold E. Dryden .....	2/10
Seeds v. Flowers, R Flinn Dickson .....	2/11
Succulents for Camellia Growers, Harold E. Dryden .....	2/14
Store Scions in Refrigerator for Later Use, Harold E. Dryden .....	2/24
Show Results	
Pacific Camellia Society .....	2/16
Orange County Camellia Society .....	2/18
Southern California Camellia Society, Descanso .....	2/20
San Diego Camellia Society .....	2/24
Southern California Camellia Society, Huntington .....	2/26
Gene Snooks' Camellia Mix .....	2/18
That's What I'm Talking About, Donald Lesmeister .....	3/3
Ever-Blooming Camellias, The Dream of the Future, Bradford King .....	3/5
Show Results	
Pomona Valley Camellia Society .....	3/6
Southern California Camellia Council .....	3/8

Kern County Camellia Society .....	3/11
Pacific Camellia Society "Late Bloomers" Show .....	3/13
Camellia Society of Sacramento .....	3/14
Special Day at the Los Angeles County Arboretum, Nancy Kress .....	3/15
Another Perspective of Yesterday, Today and Tomorrow, Bradford King .....	3/16
2010 Show Winners in California, Don Bergamini .....	3/18
Top 2010 Winners in California, Don Gray .....	3/19
Ten "Must Have" Camellias in San Diego, Dean Turney .....	3/20
History of Camellia Review, Harold E. Dryden .....	3/23
Topsoil, Our Dwindling Heritage, Mary Marshdale .....	3/24
Index of Camellia Review, Vol. 71 .....	3/25

## AUTHORS

Bergamini, Don .....	1/5; 3/20
Charvet, Dan .....	2/4; 2/8
Connelly, Kevin .....	1/18
Dickson, R. Flinn .....	2/11
Donnan, Bill .....	1/12
Dryden, Harold E. ....	2/10; 2/14; 2/24; 3/23
Gray, Don .....	3/21
King, Bradford .....	1/6; 2/6; 2/12; 2/15; 3/4; 3/18
Kress, Nancy .....	3/16
Lesmeister, Donald .....	1/11; 3/3
Lyle, Dr. Eldon W. ....	1/15
Marshdale, Mary .....	3/24
Snooks, Gene .....	2/18
Turney, Dean .....	3/22



Birthdays are good for you. The more you have, the longer you live.

A truly happy person is one who can enjoy the scenery on a detour.

Good friends are like stars—you don't always see them,  
but you know they are there.

The garden is the poor man's apothecary.  
—German Proverb

I garden, therefore I am.

As the Garden Grows, so does the Gardener  
—Author unknown

The trouble with gardening is that it does not remain an avocation.  
It becomes an obsession.  
—Phyllis McGinley

Do you think Phyllis McGinley really meant  
"camellias" instead of "gardening?"  
—Your Editor



---

## Southern California Camellia Society, Inc.

A non-profit 501(c)3 corporation

An organization devoted to the advancement of the camellia for the benefit of mankind—  
physically, mentally and inspirationally.

### OFFICERS—2010-2011

JAMES FITZPATRICK, President  
BOBBIE BELCHER, Sec./Treas./Membership  
PEGGY RAHN, Recording Secretary

NANCY KRESS, Vice President  
BETH STONE, Foreign Membership

### DIRECTORS

MELVIN BELCHER  
40641 Via Amapola, Murrieta 92562  
(951) 304-2507  
melbelcher@verizon.net

JO ANN BREWER  
4166 La Junta, Claremont 91711  
(909) 593-3442

ANNE DASHIELL  
1005 N. Hill Avenue, Pasadena 91104  
626/794-9942  
sdashiel@pacbell.net

JAMES FITZPATRICK  
4849 Biloxi Ave., Toluca Woods 91601  
(818) 506-8051  
jfitzpatrick@film.ca.gov

DON GRAY  
686 Kent Dr., Claremont 91711  
(909) 624-9107  
d.mgray@verizon.net

MARILEE GRAY  
868 Kent Dr., Claremont 91711  
(909) 624-4107  
d.mgray@verizon.net

BRADFORD KING  
1530 Marendale Lane, Arcadia 91006  
(626) 445-8730  
bdk@usc.edu

NANCY KRESS  
7475 Brydon Road, La Verne 91750  
(909) 967-2911  
kress.nancy@gmail.com

KRISTINA HOOPER  
6103 Castana Ave., Lakewood 90712  
(562) 630-2276  
kristinahopper@earthlink.net

DAVID MacLAREN  
1151 Oxford Road, San Marino, CA 91108  
(626) 405-3509  
dmaclaren@huntington.org

FRAN NEUMANN  
150 W. Jaxine Drive, Altadena 91001, CA  
(616) 797-4251  
franrick@earthlink.net

CAROL STICKLEY  
2042 Fifth Street, La Verne 91750  
626/840-4266  
cstickley@gmail.com

BETH STONE  
1997 Queensberry Rd., Pasadena 91104  
(626) 798-4993  
bethstone@earthlink.net

WAYNE WALKER  
1418 Descanso Drive, LaCanada 91011  
(818) 790-7413  
wwalker@descansogardens.org

### HONORARY LIFE MEMBERS

MEL & BOBBIE BELCHER  
SERGIO BRACCI

MARILEE GRAY  
JULIUS NUCICO

### FOREIGN REPRESENTATIVES

DENISE DiSALVIA  
61 Twynam Street  
Narrandera  
NSW 2700, AUSTRALIA  
bandenis@iinet.au

BERNIE STEVENSON  
15 Longmynd Drive  
Shrewsbury Park  
Katikati 306 NEW ZEALAND  
bstevenson@farmside.co.nz

### THE CAMELLIA REVIEW

Mel Belcher, Editor

Published by the Southern California Camellia Society, Inc. Copyright 2010

Three issues per volume

Send correspondence and manuscripts directly to the Editor. Republication is permitted if  
credit is given to *The Camellia Review* and to the author.

Please send CHANGE OF ADDRESS to the Secretary.

---

## DIRECTORY OF CALIFORNIA CAMELLIA SOCIETIES

**ATWATER GARDEN CLUB & CAMELLIA SOCIETY:** President—Kathleen Hill, 2419 Koehn Court, Atwater, CA 95301, (209) 357-0782. Meetings 3rd Tuesday, September-June, 6:30 p.m. St. Nicholas Episcopal Church, 1635 Shaffer Road, Atwater.

**KERN COUNTY, CAMELLIA SOCIETY OF:** President—Ben McMahan; Secretary—Betty Wachob, 3324 La Cresta Dr., Bakersfield, 93305. For meeting dates and times, call Helen Maas (661)872-2188.

**MODESTO, CAMELLIA SOCIETY OF:** President—Bob Dorn; Secretary—Julie Entwia, 22005 Dayton Ave., Modesto, 95356. Meetings: 1st Sunday, October-April, 1:00 p.m., 220-A Standiford Avenue, Modesto.

**NAPA VALLEY CAMELLIA SOCIETY:** President—Nancy McGowen Russell; Secretary—Fran Kane fkane@sonic.net. Meetings: 2nd Monday, September-May. Napa Senior Center, 1500 Jefferson Street, Napa.

**NORTHERN CALIFORNIA CAMELLIA SOCIETY:** President—Robert Ehrhart; Secretary—Mary Bergamini, 2023 Huntridge Court, Martinez 94553 Meetings: 1st Monday, November-April, 7:00 p.m., 1st Baptist Church, 2336 Buena Vista Ave., Walnut Creek. December and May are dinner meetings.

**ORANGE COUNTY CAMELLIA SOCIETY:** President—Steve Mefford; Secretary—Bob Sheriff, 27333 Paseo Laguna, San Juan Capistrano 92675. Meetings: 1st Monday, October-April, 7:00 p.m. Tustin Senior Center, 200 S. "C" Street, Tustin.

**PACIFIC CAMELLIA SOCIETY:** President—George Harrison. Secretary—Dorothy McQuiston, 6212 Yucca St., Los Angeles 90028. Meetings: 1st Thursday, November-April, 7:00 p.m., Descanso Gardens, 1418 Descanso Drive, La Canada.

**POMONA VALLEY CAMELLIA SOCIETY:** President—Marilee Gray; Secretary—Dorothy Christinson, 3751 Hoover St., Riverside 95204. Meetings: 2nd Thursday, November-April, 7:00 p.m., La Verne Community Center, 3680 "D" Street, La Verne.

**SACRAMENTO, CAMELLIA SOCIETY OF:** President—Carol Schanz; Secretary—Joan Lesmeister, 4512 Marble Way, Carmichael, CA 95608. Meetings: 4th Tuesday, October-April, 7:30 p.m., Studio Theater, 1028 "R" Street, Sacramento

**SAN DIEGO CAMELLIA SOCIETY:** President—Gene Snooks; Secretary—Lew Gary, 11419 Cabela Place, San Diego 92127. Meetings: 3rd Wednesday, November-April, 7:30 p.m, Room 101 Casa del Prado, Balboa Park, San Diego.

**SAN FRANCISCO PENINSULA CAMELLIA SOCIETY:** President—Caroline Beverstock; Secretary—Nancy Kancev, 1514 S. Delaware St., San Mateo, CA 94402 Meetings: 4th Monday, October-March, Veterans' Building Annex, 711 Nevada St., Rm. 20, Redwood City (formerly Peninsula Camellia Society)

**SANTA CLARA COUNTY, INC., CAMELLIA SOCIETY OF:** President—John Mendoza, 1025 Harrison Street, Santa Clara 95050. Meetings: 3rd Wednesday, October-April, 7:30 p.m., Lick Mill Park, 4750 Lick Mill Boulevard, Santa Clara.

**SOUTHERN CALIFORNIA CAMELLIA SOCIETY:** President—James Fitzpatrick; Secretary—Bobbie Belcher, 40641 Via Amapola, Murrieta, CA 92562 Meetings 4th Thursday October to April 7:00 p.m., Ayres Hall, Los Angeles County Arboretum, 301 Baldwin Avenue, Arcadia. Meeting is 3rd Thursday in November. No meeting in December.



On a recent beautiful Saturday morning 11 of our stalwart camellia hobbyists joined Wayne Walker, Curator at Descanso Gardens, to prune camellias in the Descanso Camellia Forest. See inside front cover for more of the pruners.

Above—Jim Fitzpatrick      Lower—Wayne Walker

Others pruners included Steve Mefford, Don and Marilee Gray, Jim and Dorothy McQuiston, George Harrison and Carol Stickley. Some of the group were camera-shy.

Later that same day President Jim moderated a meeting of the Southern California Camellia Society Board of Directors with six of the pruners present. What dedication on the part of all these folks.

Pictures by Carol Stickley





*C. japonica*  
'Princess Masako'

*C. japonica*  
'Tomorrow's Dawn'



*C. reticulata* 'Cornelian'

See descriptions in Brad King's  
article on pages 18 and 19.

Photos by Brad